



**DIPLOMATIC**  
HYDRAULICS

66 300/104 ED



# RPC1\*/4M

## FLOW CONTROL VALVE

### SERIES 10

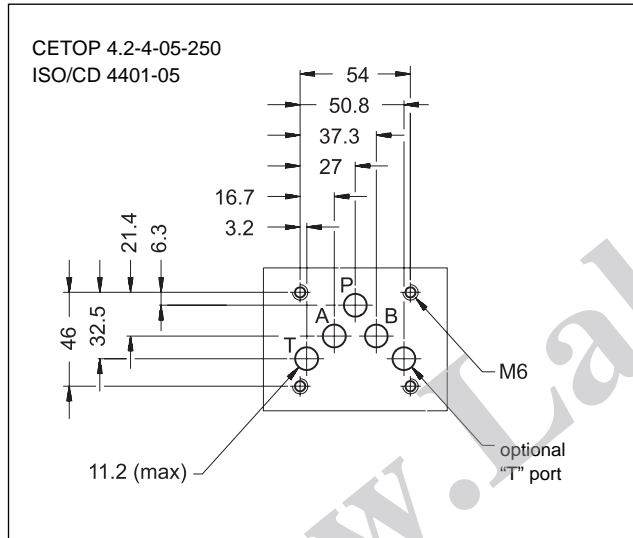
**MODULAR VERSION**

**CETOP 05**

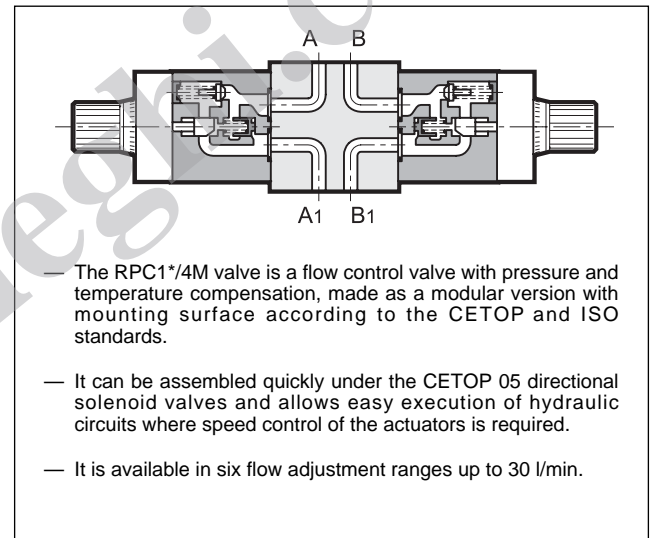
**p max 250 bar**

**Q max (see performance ratings table)**

#### MOUNTING INTERFACE



#### OPERATING PRINCIPLE

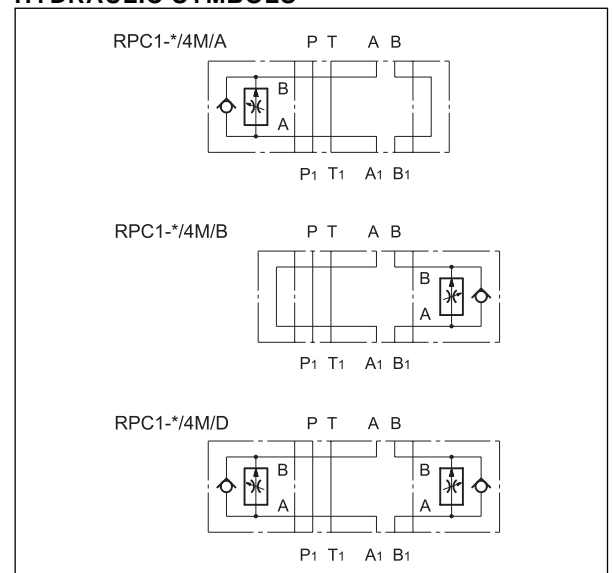


#### CONFIGURATIONS (see Hydraulic symbols table and Identification Code - par. 1)

#### PERFORMANCE RATINGS (measured with mineral oil of viscosity 36cSt at 50°C)

Maximum operating pressure	bar	250
Maximum flow rate in the controlled lines	l/min	1-4-10-16-22-30
Maximum flow rate in the free lines	l/min	100
Reverse free flow maximum flow rate	l/min	40
Ambient temperature range	°C	-20 ÷ +50
Fluid temperature range	°C	-20 ÷ +80
Fluid viscosity range	cSt	10 ÷ 400
Recommended viscosity	cSt	25
Degree of fluid contamination	According to NAS 1638 class 10	
Mass: RPC1*/4M/ A-B RPC1*/4M/ D only modular block CETOP 05 without flow control valves: RPC1-K/4M/D	kg	4,6 5,6 3

#### HYDRAULIC SYMBOLS



**NOTE:** for detailed information regarding the RPC1 flow control valve, see catalogue 32 200



# RPC1\*/4M

## SERIES 10

### 1 - IDENTIFICATION CODE

<b>R</b>	<b>P</b>	<b>C</b>	<b>1</b>	<b>-</b>	<b>/</b>	<b>4</b>	<b>M</b>	<b>/</b>	<b>/</b>	<b>10</b>	<b>/</b>	
----------	----------	----------	----------	----------	----------	----------	----------	----------	----------	-----------	----------	--

Flow control valve with pressure and temperature compensation

Flow adjustment range:

<b>1</b> = 1 l/min	<b>16</b> = 16 l/min
<b>4</b> = 4 l/min	<b>22</b> = 22 l/min
<b>10</b> = 10 l/min	<b>30</b> = 30 l/min

**K** = only for CETOP 05 modular block supplied without flow control valves

Modular version CETOP 05 size

Seals: omit for mineral oils  
**V** = viton for special fluids

Series No. (the overall and mounting dimensions remain unchanged from 10 to 19)

**A** = control from chamber A of the actuator  
**B** = control from chamber B of the actuator  
**D** = control from chambers A and B of the actuator  
(A and B configurations are not available in K version)

### 2 - HYDRAULIC FLUIDS

Use mineral oil-based hydraulic fluids, with the addition of suitable anti-frothing and anti-oxidizing agents. For the use of other types (water glycol, phosphate esters and others), please consult our technical department.

### 3 - OVERALL AND MOUNTING DIMENSIONS

dimensions in mm

1	Mounting surface with sealing rings: 5 OR type 2050
2	Adjustment knob. Adjustment in 3 turns of the knob. Rotate anticlockwise to increase flow.
3	Knob locking screw
4	Side locking plate

	<p><b>DIPLOMATIC HYDRAULICS</b>          20025 LEGNANO (MI) - P.le Bozzi, 1 / Via Edison          Tel. 0331/472111 - Fax 0331/548328</p>
--	--